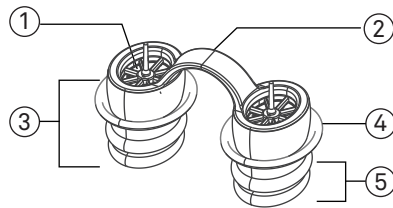


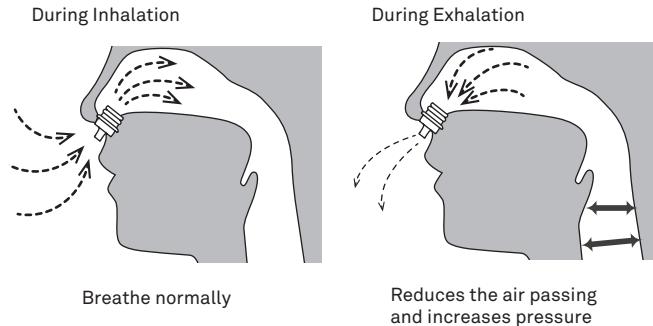
# ZEEPAP ANTI-SNORING DEVICE

The ZEEPAP is intended to treat snoring while others are intended for obstructive sleep apnea. ZEEPAP includes a flow resistance adjusting element (valve seat) and a nasal support element. The flow resistance is designed so that the expiratory flow resistance is greater than the inspiratory flow resistance which expands the airway and keep it open.

- Components**
- ① Valve Seat
  - ② Bridge
  - ③ Nasal Insert
  - ④ Soft Flange
  - ⑤ Double Hump



## How ZEEPAP Works



## Intended Use

ZEEPAP is intended to treat snoring by generating positive air pressure while expiration.

## Contraindications

- This device is contraindicated for use in patients with the following conditions:
- An acute upper respiratory (including nasal, sinus, or middle ear) inflammation or infection
  - Severe breathing disorders include hypercapnic respiratory failure, respiratory muscle weakness, pneumothorax, pneumomediastinum, etc.
  - Severe heart disease (including heart failure)
  - Pathologically low blood pressure

## Warnings

- Carefully read, understand, and follow directions before use.
- As with all intranasal devices, there are inherent risk factors associated with using them. You should proceed with extreme caution while using this product and regularly examine it before and after each use for any defect that may present a potential health hazard.

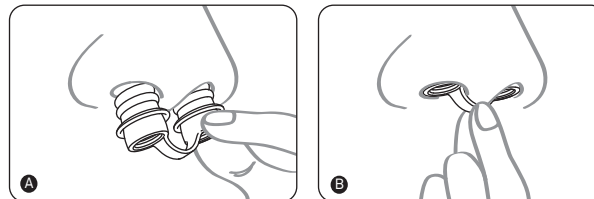
- Patients who develop nasal, sinus, ear infections or inflammation, redness or irritation of the nose or skin, or experience any breathing difficulties after using the device should discontinue the use of the device and contact a physician. Assessment of effectiveness and follow-up evaluation should be conducted to ensure good treatment effect.
- This device is intended for single-patient use only and should not be shared with other people to avoid the risk of cross contamination.
- Do not attempt to sterilize or use disinfectants on this device.
- Make sure that all Nasal Inserts are free of any obstructions.
- Not suitable for use if under the age of 18. Persons under the age of 18 must consult a doctor before use.
- Keep out of reach of children.
- Carefully inspect each component for any wear or damage.
- Discontinue use and replace if you notice any cracks, weakening, or discoloration.
- Do not break the Bridge or use one of the Nasal Inserts on its own.
- Do not pull or twist the valve seat. If the valve seat or valve is twisted or falls off, please stop using it and replace it.
- Do not use it for more than 12 hours a day.

## Applying the Device

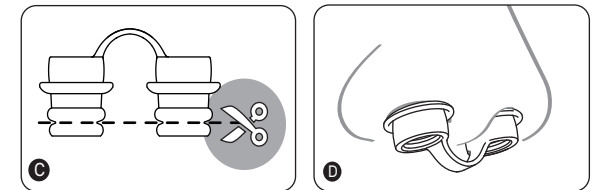
1. Clean your nasal passages to maximize airflow if desired. Blowing your nose and nasal irrigation may work well.
2. Clean your ZEEPAP as described in the Cleaning and Storage Instructions to eliminate germs and for fitting lubrication.
3. Please check if the installed valve seat is in position and the valves are intact. Replace the device when the valve is missing, deformed or broken.
4. Insert the Double Hump of the Nasal Inserts into your nostrils. Proper placement is essential for performance and comfort.
5. To remove the device, gently pull the Nasal Inserts out of your nose.
6. As your ZEEPAP conforms to your nose, you may feel light pressure or tickle, which quickly subsides. It is natural to feel tenderness initially. Please be patient during this 1-2 week adjustment period. If necessary, delay uses to alleviate discomfort. Resume use after a 24-hour rest period.

## Quick Start Guide

- A** Gently and properly slide the Nasal Insert back and forth into your nostril by placing the Double Hump as shown in fig A. Humidifying may be considered for lubrication.(fig. A)
- B** To achieve an optimal fit, you may need to adjust the placement by gently pulling or pushing the Bridge with your fingers.(fig. B)



- C** For a better experience, if the Nasal Insert is too long, you may cut off a loop of the Double Hump. Please cut smoothly along the groove between the Humps when trimming and avoid producing sharp edges.(fig. C)
- D** For the smaller nostrils, without compromising safety and efficacy, the Nasal Inserts can be plugged into until the Soft Flange touches the outside of the nostril, rather than fully inserted.(fig. D)



## Cleaning & Storage

- Immediately after each use, thoroughly clean with cool water and mild soap. Avoid hot water. Rinse all components and shake out excess water from inside the Nasal Inserts. Thoroughly rinse again before use.

NOTE: The Nasal Inserts should be washed after each use.

**Caution:** Only use pure, unscented soap. Do not use alcohol, petroleum products, or strong cleaners. Do not machine wash, scrub, or wipe any component. All of these may cause damage and reduce the life of the product.

- Allow all components to completely air-dry before storing at room temperature. Store the device in a dry, ventilated place out of direct sunlight.

## Description of Symbols

- |  |                |  |                              |
|--|----------------|--|------------------------------|
|  | Manufacturer   |  | Date of manufacture          |
|  | Batch code     |  | Consult instructions for use |
|  | Medical device |  | Unique Device Identifier     |

- |  |   |  |                         |
|--|---|--|-------------------------|
|  | Non-sterile   |  | Warning or caution      |
|  | Keep dry  |  | Keep away from sunlight |
|  | Storage/Transport humidity Limits                                 |  |                         |
|  | Storage/Transport temperature limits                              |  |                         |
|  | Operation/Storage atmospheric pressure limits                     |  |                         |
|  | Do not use if package is damaged and consult instructions for use |  |                         |

Manufactured by  
**SOMNICS**  
 5F, No. 22, Sec. 2, ShengYi Rd, Hsinchu Science Park,  
 Zhubei City, Hsinchu County, 30261, Taiwan  
 United States Customer Service  
 TEL : +1-833-766-6427(+1-833-SOMNICS)  
 FAX : +1-833-847-2009 Email : contact.us@somnics.com

Designed and Made in Taiwan. Patent Pending.